

The Importance of Philosophy for the Sciences

Nathalie Gontier, PhD

Post-Doctoral Researcher FCT

Grant ID SFRH/BPD/89195/2012 and project ID UID/FIL/00678/2013

FCT Fundação para a Ciência e a Tecnologia

MINISTÉRIO DA CIÊNCIA, TECNOLOGIA E ENSINO SUPERIOR



CFCUL

Centro de Filosofia das Ciências
da Universidade de Lisboa

<http://cfcul.fc.ul.pt>

FCiÊNCIAS.ID

Associação para a Investigação
e Desenvolvimento de Ciências

Departamento de
História e Filosofia
das Ciências



**Ciências
ULisboa**

U LISBOA

UNIVERSIDADE
DE LISBOA

What can philosophy do for science?

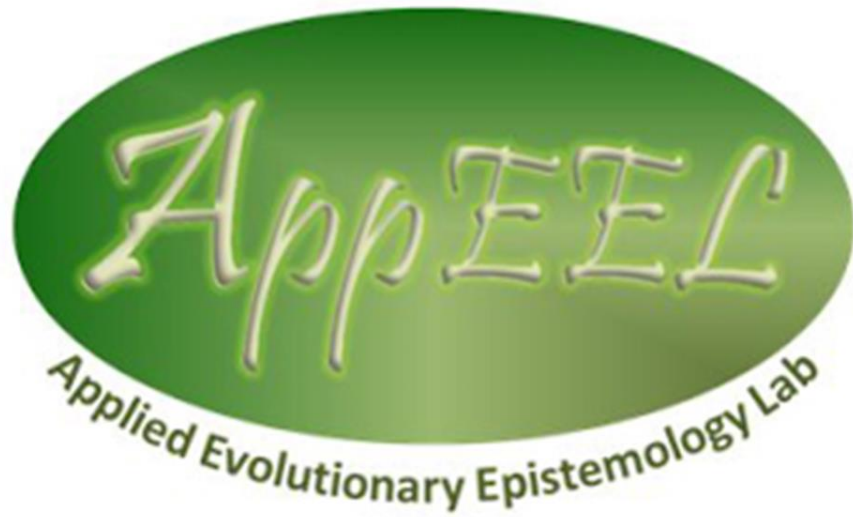
- **Philosophy of Science**: Research & analysis of paradigm formation

- Methodologies (principles of science, epistemology)
- Scientific cultures and practices (divergence and convergence)
- Theories (origins, explanatory aims and scope)

- **Science**: Development, execution or refutation of paradigms

- Data mining & analysis
- Modeling (quantification, experimentation, instrumentalization)
- Theory formation

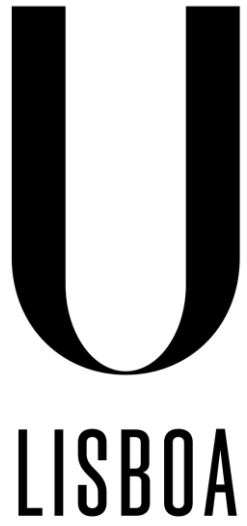
- **Example**: debates on the **Modern & Extended Synthesis**, drawn from interdisciplinary practices organized by AppEEL



<http://appeel.fc.ul.pt>

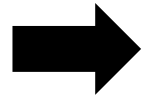
- Research
- Community Formation/
Conferences
- Publication Venues
- Outreach





UNIVERSIDADE
DE LISBOA

Our location



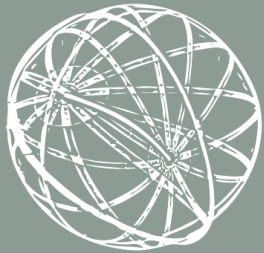
Departamento de
História e Filosofia
das Ciências



Ciências
ULisboa



CIUHCT



Centro Interuniversitário de História das Ciências e da Tecnologia
FCUL | FCT-UNL



CFCUL

Centre for Philosophy of Science
of the University of Lisbon

<http://cfcul.fc.ul.pt>



Centro de Filosofia das Ciências da Universidade de Lisboa

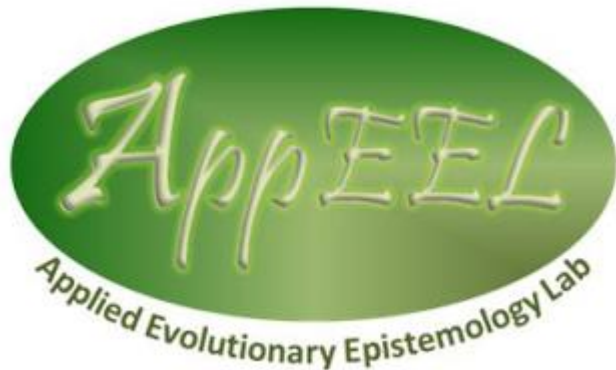
Center for Philosophy of Sciences of the University of Lisbon

Research Groups

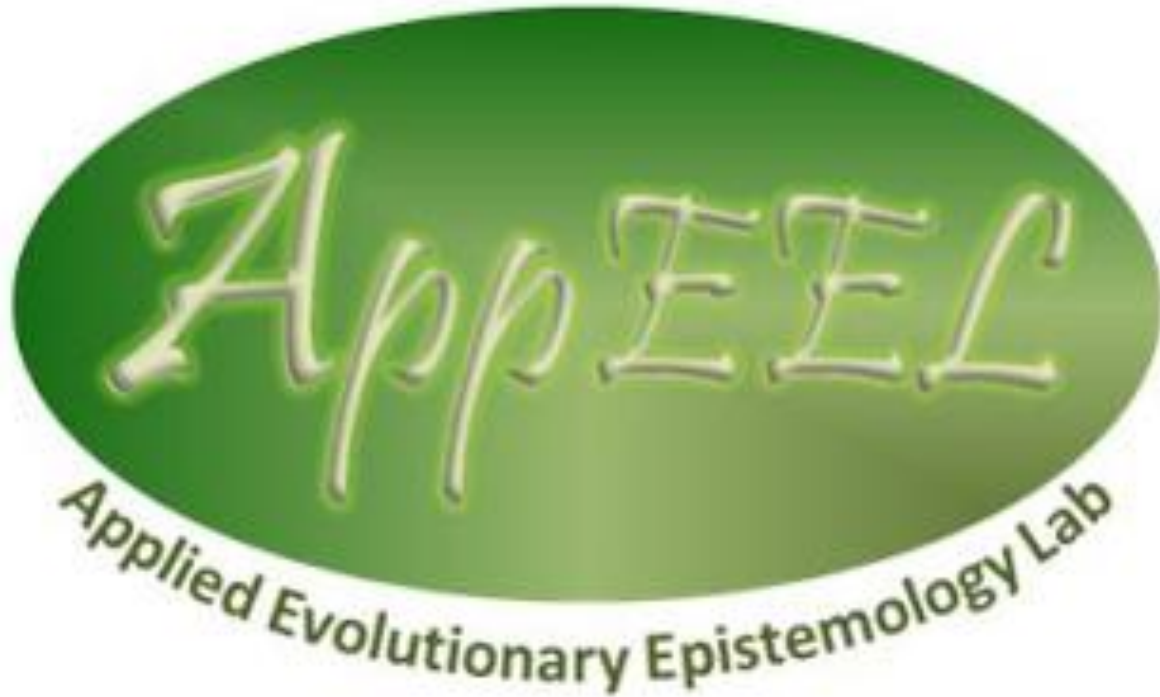
Formal Sciences,
Methodology and
Epistemology

Natural Sciences

Technology, Human
Sciences, Art and Society



My group



<http://appeel.fc.ul.pt>

- Founded in July 2012 with the support of the [John Templeton Foundation](#)
- Currently financed by the [FCT](#) (Project ID: UID/FIL/00678/2013 & Grant ID: SFRH/BPD/89195/2012)
- International team
- 14 Members, 6 alumni
- International Board of 7
- 6 partner institutions

CLES

Center for Language Evolution Studies
Nicolaus Copernicus University



LOS

Language Origins Society

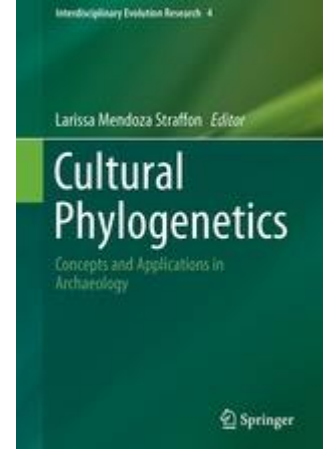
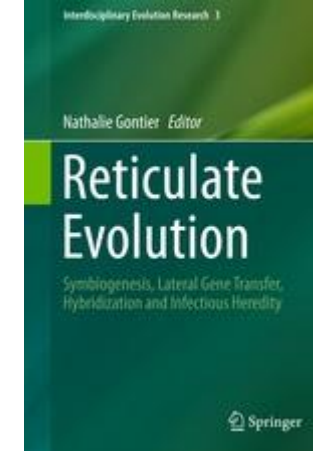
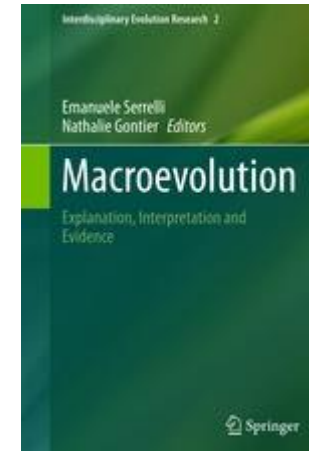
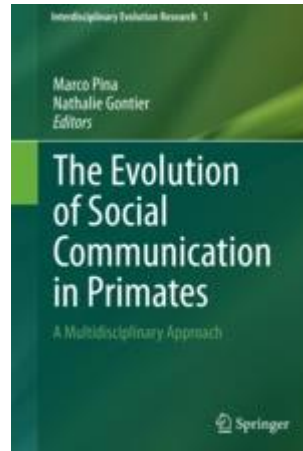
RUI DIOGO LAB



ASSOCIAÇÃO PORTUGUESA DE PRIMATOLOGIA

Evolution & Cognition

Our Outputs



- Indexed in the **WOS Book Citation Index**
- **Springer Nature**, Biological and Biomedical Sciences
- The series provides a scholarly platform for the growing demand to **examine specific evolutionary problems of life and the sociocultural domain** from within multiple disciplines.
- **Want to publish an anthology? Contact [Nathalie Gontier](#)**

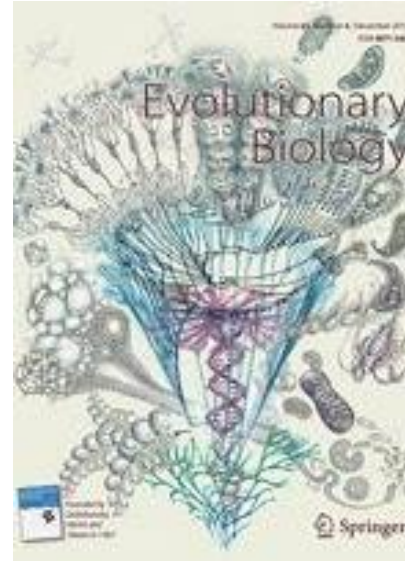
More Outputs



Language Evolution: Focus on Mechanisms

Edited by Przemysław Zywiński,
Nathalie Gontier, Sławomir
Waciewicz

Volume 63, Pages 1-
130 (September 2017)



Evolutionary Patterns

Edited by Nathalie Gontier

Volume 43, Issue 4 (Dec 2016)



Darwin evaluated by contemporary evolutionary and philosophical theories

Edited by Nathalie Gontier, Francisco
Carrapiço, Marco Pina, André Levy
and Helena Abreu

Volume 129, Issue 2-3 (Sep 2010)

Experiences & General Receptivity

- **Positive**

- 2012-13 Templeton Project: +/- 1.000 ppl
- Publications: IER-Series: + 55.000 downloads
- Enables (participation in) pioneering research

- **Negative**

- Underappreciation of philosophy of science by scientists & by philosophers
- “Foreigner” in other disciplines, deserter in one’s own
- Unfamiliarity & underappreciation for interdisciplinarity & efforts for community formation or outreach by funding agencies and review panels

- **Lessons for policy**

- History, Philosophy & Outreach of Science could be one commission made up of interdisciplinary panels
- Funding agencies could evaluate based on participation & download numbers
- Work with the ones that want to work with you!

Protolang, September 2019 in Lisbon!

1. History, Philosophy and Methodologies
2. Paleolithic Cosmologies
3. Mechanisms and Processes
4. Multimodal Theories
5. Modelling

11+ invited sessions
Satellite events
Mini-symposia
Talks
Posters

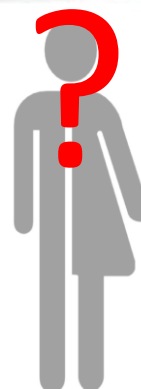
www.protolang.org

serenanicchiarelli©



Thanks!

Do you want to collaborate?



nlgontier@fc.ul.pt

<http://appeel.fc.ul.pt>



Centro de Filosofia das Ciências da Universidade de Lisboa

Center for Philosophy of Sciences of the University of Lisbon

Filosofia da Ciência, Tecnologia, Arte e Sociedade

Programa de Doutoramento FCT



- Doctoral Program:
 - Lógica e Filosofia da Ciência
 - Filosofia da Tecnologia
 - Ciência e Sociedade
 - Arte e Ciência
 - Bioética
- Applications are open all year round
- Jury decides in September & January



<http://kairos.campus.ciencias.ulisboa.pt/>